

# Löwchen Grooming

(According to the AKC standard)

By Diana Heathcote  
Calikij.com



## "Official Standard of the Löwchen

**General Appearance:** A small, bright, and lively dog that originated as a companion breed in pre-Renaissance Europe where ladies of the court groomed it in the likeness of a little lion. Breed characteristics are a compact, balanced body; a relatively short, broad topskull and muzzle; and a proud, lively gait that accentuates the lion cut with a long flowing mane. These quintessential features, combined with an outgoing and positive attitude, result in a dog of great style. **Size, Proportion, Substance:** Size - Ideally, mature dogs and bitches are between 12 to 13 inches at the withers. Height may vary 1 inch above or below this ideal. Only where the comparative superiority of a specimen outside this range clearly justifies it should greater latitude be taken. Absolute height at the withers should not take precedence over correct proportion and substance. **Proportion** - The body is just off-square when properly balanced. The distance from the prosternum to the point of buttocks is slightly greater than the distance from the withers to the ground in an 11 to 10 ratio. The distance from the ground to the elbow is slightly greater than the distance from the elbow to the withers. The Löwchen should never be low stationed. **Substance** - The mature Löwchen is sturdily built with strong bone and muscular hindquarters, but never coarse. **Head:** The **head** is a hallmark breed characteristic. The **expression** is bright, alert, and lively. The eyes are set well into the skull, round in shape, large, set well apart, and forward looking. **Eyes** are dark brown in color; lighter colored dogs may have lighter brown eyes but darker eyes are preferred. The **ears** are pendant, moderate in length, well fringed, and set on slightly above the level of the eye. The **backskull** is broad and relatively flat from ear to ear. The stop is moderately well defined. The length from nose to base of stop is two-thirds of the length from base of stop to occiput. The **muzzle** is well filled and relatively broad with moderate depth of underjaw resulting in a slightly rounded finish to the muzzle. The jaw is wide enough to accommodate all incisors in a straight row. Coloration of pigment is in accordance with coat color. Nose and eye rims are completely pigmented. The lips are tight with color the same as the nose. The **bite** is scissors and the teeth are rather large and well spaced with complete dentition. **Neck, Topline, Body:** The **neck** is of good length with a slight arch, fitting smoothly into the shoulders and topline. The head is carried high when the dog is moving. The **topline** is level from withers to tailset. The **body** is slightly off-square when properly balanced. The loin is short and strong. The ribs are well sprung. The brisket is moderate in width and extends approximately to the elbows. The underline has a slight tuck-up at the loin. The **tail** is set high and carried in a well-arched cup-handle fashion with the plume touching the back when the dog is moving. A dropped tail while standing is not to be penalized. **Forequarters:** The shoulders are strong and well laid back with smooth musculature. The upper arm is of equal length to the shoulder blade and the two meet in a near 90 degree angle. The elbows are held close to the body. Forearms are of good length and the distance from the withers to the elbow is slightly less than the distance from the elbow to the ground. From the front the legs are perfectly parallel from the elbows to the feet. The bone is more round than oval and of medium size with only a slight decrease in size at the pasterns. The pasterns are short, parallel from the front, and very slightly bent when viewed from the side. The forefeet point straight ahead and are tight and well arched with deep pads, and the two center toes are slightly in advance of the two outer toes. Dewclaws may be removed. The nails are relatively short. **Hindquarters:** The pelvic bone projects beyond the set of the tail and is at an approximate 30 degree angle from a perfectly horizontal line. The upper and lower thighs are well muscled and of approximately equal length with medium bone. The stifles are well bent. The hocks are well let down and perpendicular to the ground from any angle. The hindfeet point straight ahead, are slightly smaller than the forefeet, and are well arched with deep pads. **Coat:** The Löwchen must be shown in the traditional Lion Clip. The unclipped areas of the coat are long, rather dense and moderately soft in texture. The unique Löwchen coat consists of hairs of varying diameters with a more noticeable collection of

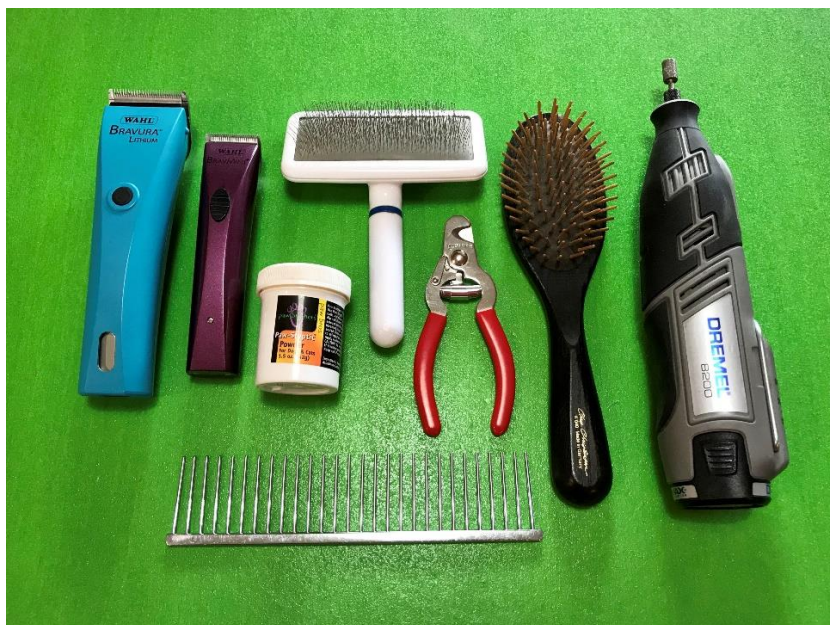
denser hair around the neck and withers. The coat may fall to either side but must never be artificially parted. It has a slightly to moderately wavy appearance. Wiry, woolly, curly, and flat coat textures are not correct and are to be penalized to the degree of severity. No scissoring or shaping of the unclipped coat is permitted. Puppies typically have a softer coat. **Lion Clip** - the coat is clipped to about ⅛ inch on the following parts of the body: from the last rib back to and including the hindquarters; the hindquarters to the hock joints; the front legs from the elbows to a point on the legs which is equal to the same distance from the ground to the hock joints leaving cuffs of hair on all four legs; the tail from the base to approximately one-half way to the tip leaving a plume at the end of the tail; and the feet are entirely clipped. The unclipped areas must be completely natural and untrimmed. On no account should the unclipped areas be smoothed, shortened, shaped or otherwise tidied with anything other than a comb or brush. Any clip other than specified or any shaping or scissoring of the long coat are disqualifications. **Color:** All colors and color combinations are acceptable with no preference given to any. **Gait:** Movement at a trot is effortless with good reach in front and full extension in the rear. From the front the forelegs move in almost parallel lines converging slightly as the speed increases. From the rear the legs move in almost parallel lines and in the same line of motion as the forelegs, converging slightly as the speed increases. From the side movement is efficient and ground covering. The forelegs reach well out in front in a long, relatively low stride, and the rear legs come well under the body and extend behind to maximize propulsion. The body remains nearly square in outline and the topline is held firm and level, with the tail being carried curved over the back and the head held above the level of the back. **Temperament:** The Löwchen is alert, intelligent, and affectionate with the overall qualities of a loving companion dog. It has a lively, outgoing, and inquisitive personality **Disqualifications:** *Any trim other than specified. Shaping or scissoring of the long coat.*

Approved May 11, 2010  
Effective July 28, 2010"

Taken from AKC standard

## Tools needed

By Diana Heathcote, CaliKij Calikij.com



## How to hold your clippers



## Löwchen Grooming; Mane

By Diana Heathcote, CaliKij Calikij.com



The standard states; “The Löwchen must be shown in the traditional Lion Clip. Lion clip - the coat is clipped to about  $\frac{1}{8}$  inch on the following parts of the body: from the last rib back to and including the hindquarters;”

By not shaving all the way up to the first rib, it will affect the way the dogs’ proportions appear.

How to set your mane line; 1. Brush hair straight down. 2. Find the last rib. 3. Part the hair with a comb. 4. Shave.



## Löwchen Grooming; Clipped area Length

By Diana Heathcote, CaliKij Calikij.com



#7F with the grain of growth



#10 against grain of growth

The standard states; “the coat is clipped to **about ⅛ inch**”

That is a #7or #7F blade with the grain of growth to achieve that ⅛ length. However, most use at least #10 blade against the grain of growth for show.



With the grain of growth



against the grain of growth

## Löwchen Grooming; Tail

By Diana Heathcote, CaliKij Calikij.com

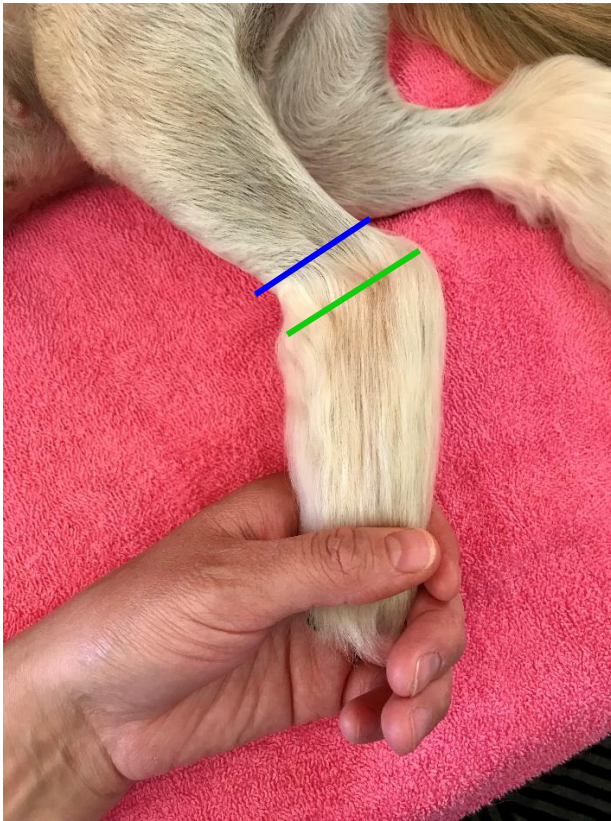


The standard states; "...clip...the tail from the base to **approximately one-halfway** to the tip leaving a plume at the end of the tail"

(There are not exact details, the colored lines are the most commonly used for show.)

## Löwchen Grooming: Back Cuffs

By Diana Heathcote, CalikKij Calikij.com

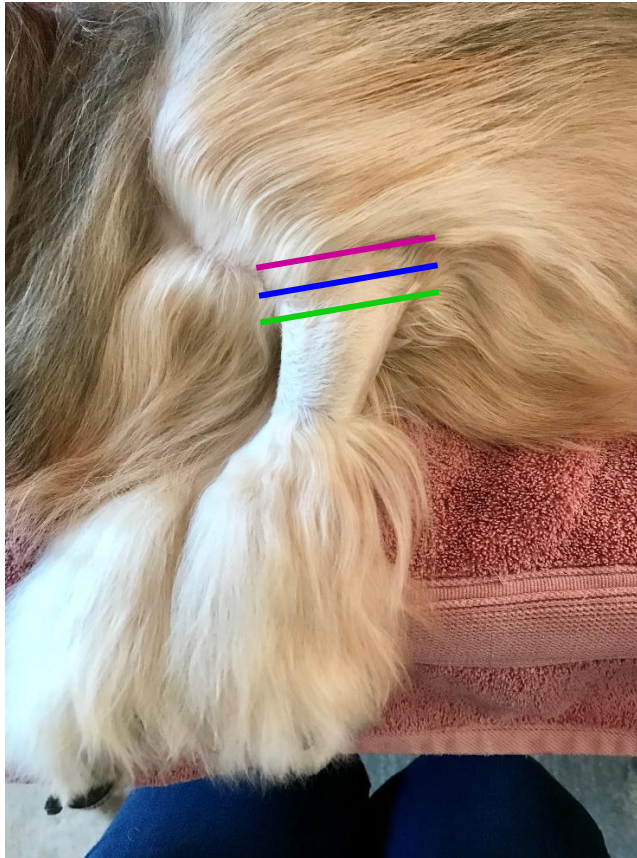


The standard states; "the hindquarters to the hock joints"

(There are not exact details, the colored lines are the most commonly used for show.)

## Löwchen grooming; Forearm

By Diana Heathcote, CaliKij Calikij.com

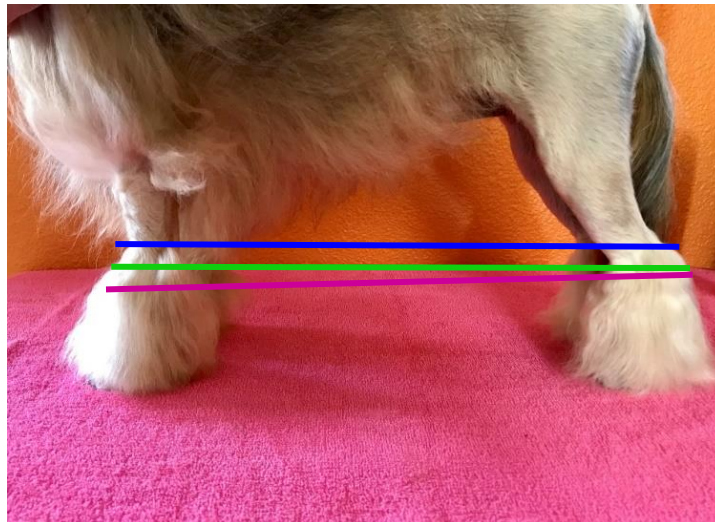


The standard states; “the front legs **from the elbows**”

(There are not exact details, the colored lines are the most commonly used for show.)

## Löwchen Grooming; Front cuffs

By Diana Heathcote, CaliKij Calikij.com



The standard states; “the front legs from the elbows to a point on the legs which is equal to the same distance from the ground to the hock joints leaving cuffs of hair on all four legs”

(There are not exact details, the colored lines are the most commonly used for show.)

## Löwchen Grooming; Feet

By Diana Heathcote, CaliKij Calikij.com



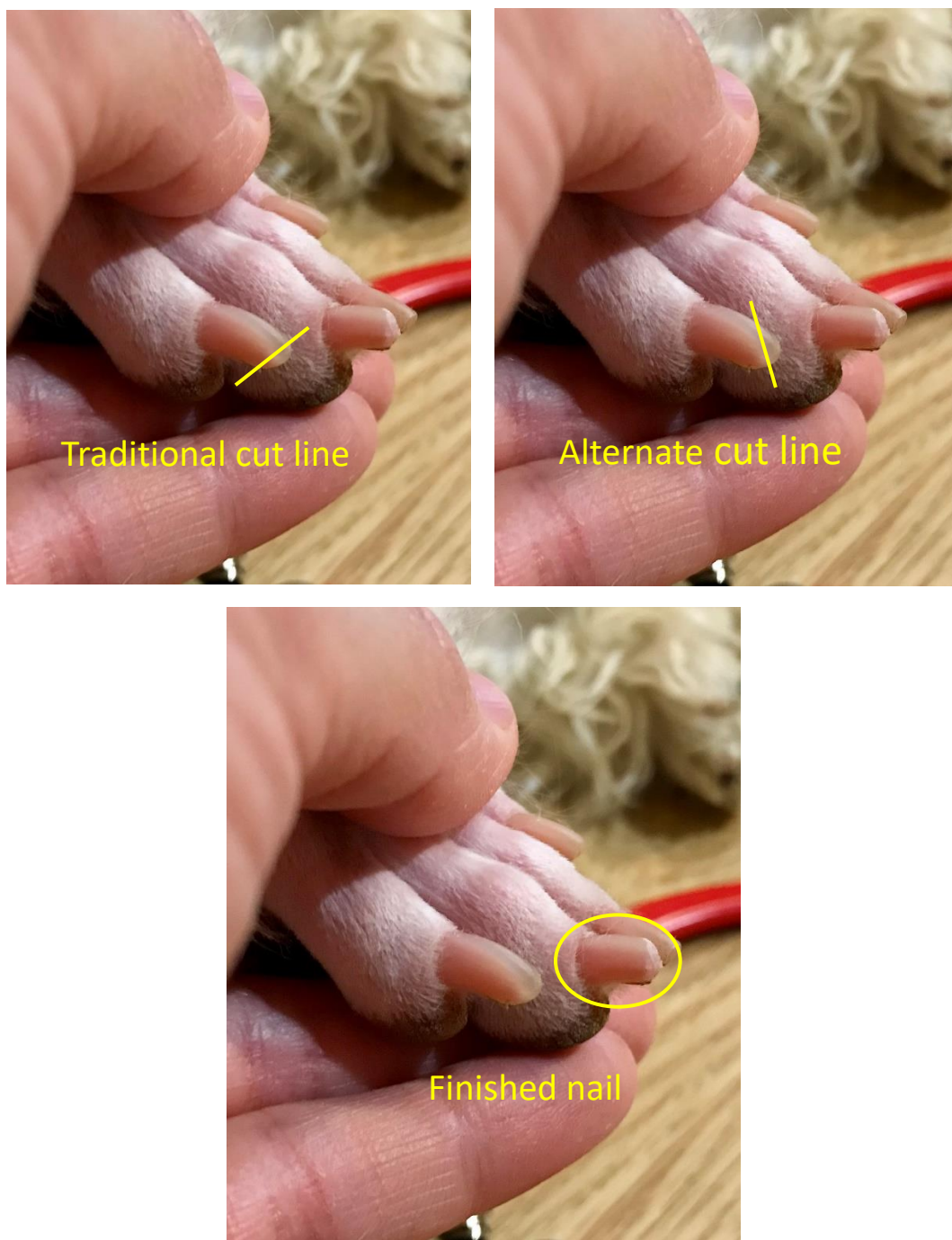
The standard states; "the feet are entirely clipped."  
(There are not exact details, the colored lines are the most commonly used for show.)

How to shave feet; 1. Shave outside edges of foot. 2. Shave top of foot. 3. Shave in between toes. 4. Shave in scooping motion between pads.



## Löwchen grooming; Nails

By Diana Heathcote, CaliKij Calikij.com



To achieve beautiful nails, use the Traditional cut line and Alternate cut line then round with Dremel.

## Löwchen grooming; Coat

By Diana Heathcote, CaliKij Calikij.com



(Löwchen in the photos are natural and untrimmed at different ages.)

The standard states; “The unclipped areas must be completely natural and untrimmed. On no account should the unclipped areas be smoothed, shortened, shaped or otherwise tidied with anything other than a comb or brush. Any clip other than specified or any shaping or scissoring of the long coat are disqualifications.



[Calikij.com](http://Calikij.com)



CaliKij ©2019 Diana Heathcote  
All Rights Reserved